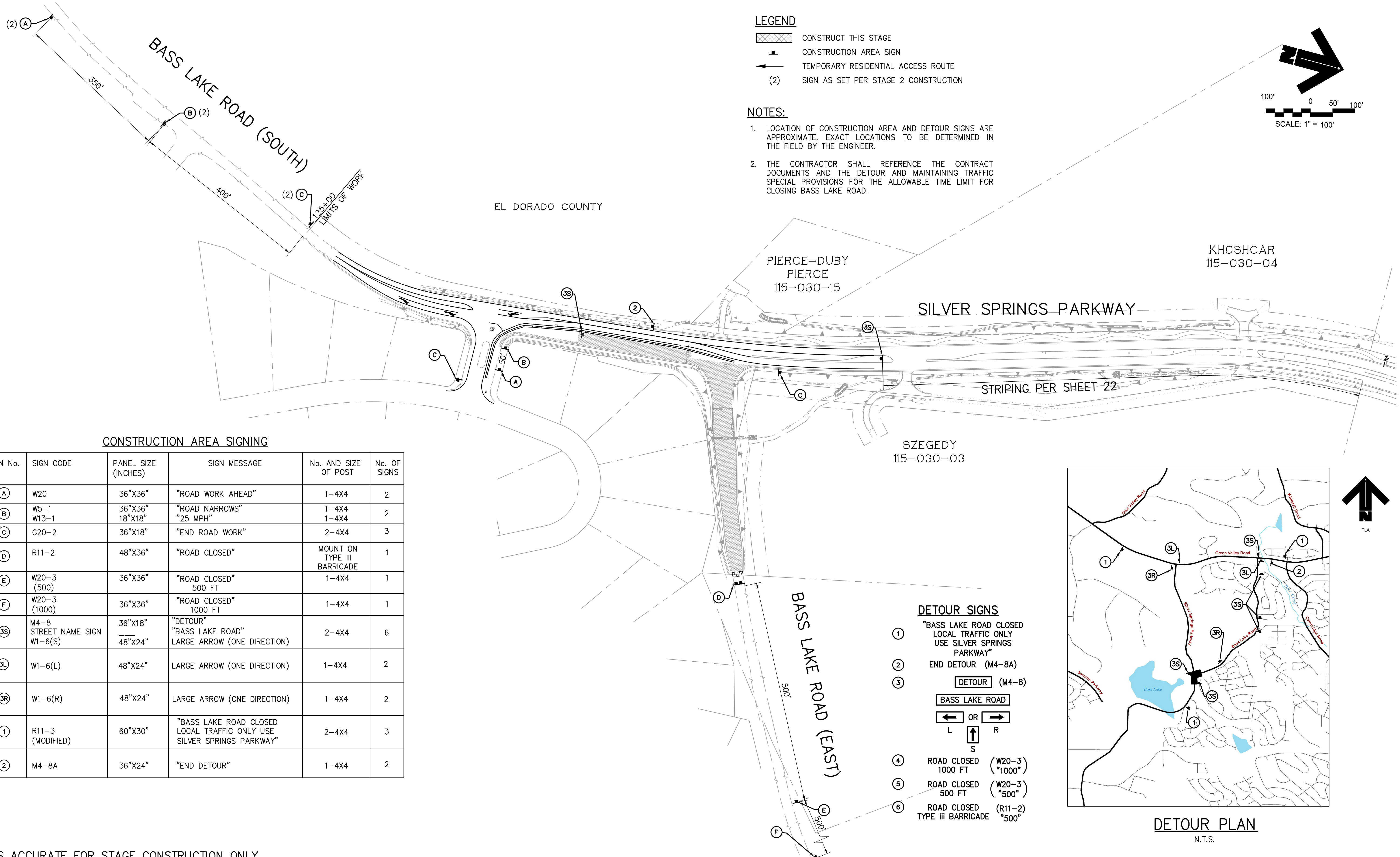
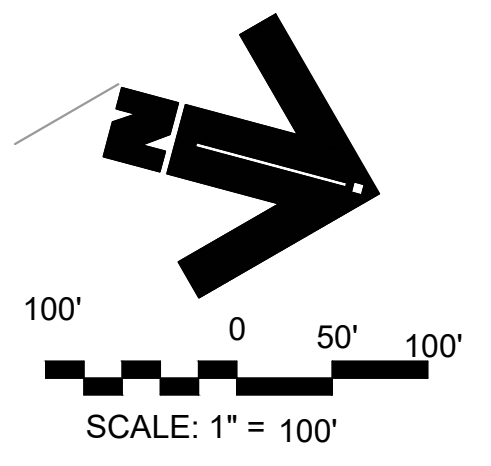


File: K:\proj\14XX\1480\DWG\SILVER SPRINGS 76108\100% PP SET\Plan Sheets\31\_CONST STAGE 3 SIGNAGE.dwg Jun 01, 2020 - 1:53pm ewinkler  
 ORIGINAL SCALE IS IN INCHES  
 2  
 1  
 0  
 FOR REDUCED PLANS



- LEGEND**
- CONSTRUCT THIS STAGE
  - CONSTRUCTION AREA SIGN
  - TEMPORARY RESIDENTIAL ACCESS ROUTE
  - (2) SIGN AS SET PER STAGE 2 CONSTRUCTION

- NOTES:**
- LOCATION OF CONSTRUCTION AREA AND DETOUR SIGNS ARE APPROXIMATE. EXACT LOCATIONS TO BE DETERMINED IN THE FIELD BY THE ENGINEER.
  - THE CONTRACTOR SHALL REFERENCE THE CONTRACT DOCUMENTS AND THE DETOUR AND MAINTAINING TRAFFIC SPECIAL PROVISIONS FOR THE ALLOWABLE TIME LIMIT FOR CLOSING BASS LAKE ROAD.

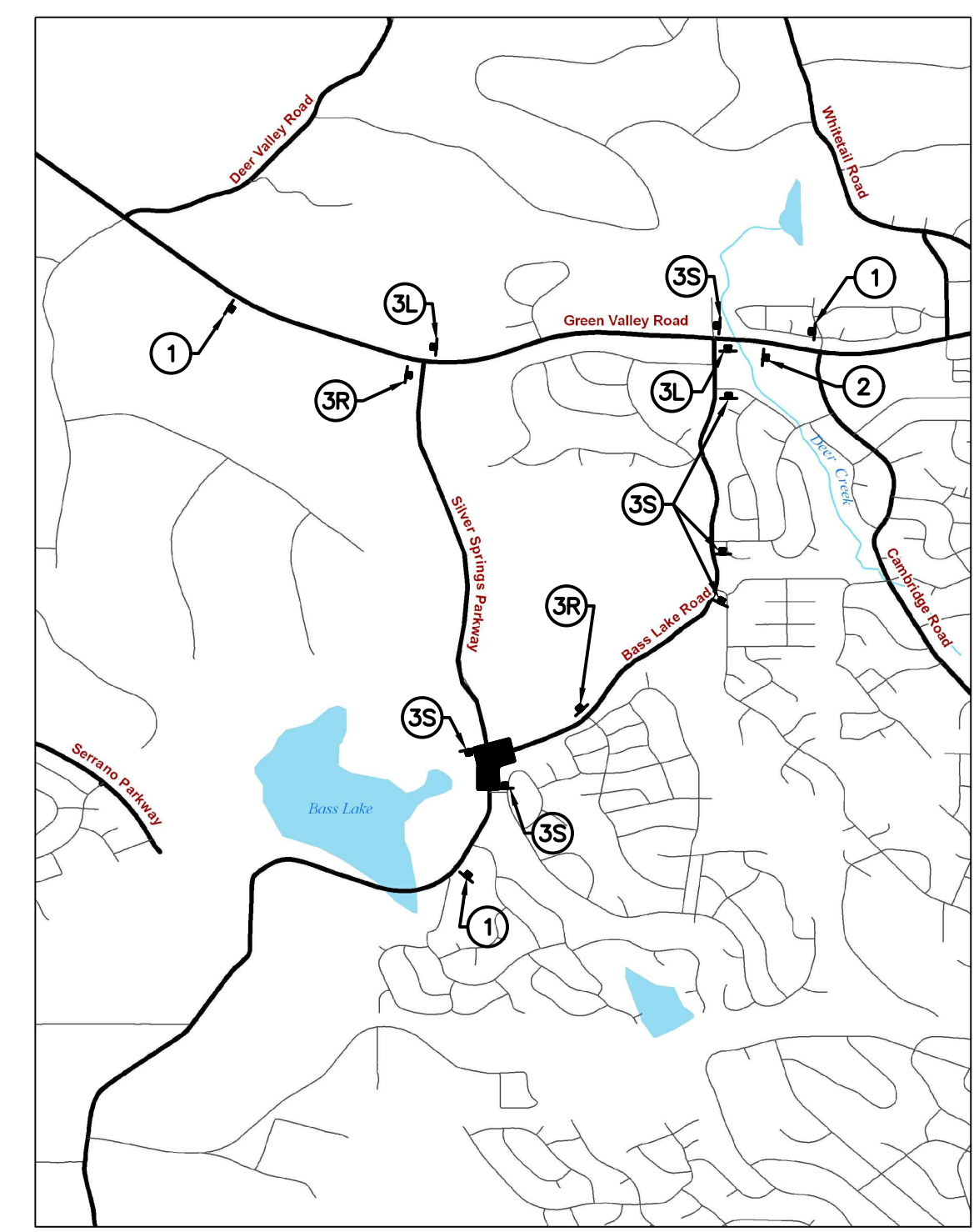


**CONSTRUCTION AREA SIGNING**

SIGN No.	SIGN CODE	PANEL SIZE (INCHES)	SIGN MESSAGE	No. AND SIZE OF POST	No. OF SIGNS
(A)	W20	36"X36"	"ROAD WORK AHEAD"	1-4X4	2
(B)	W5-1 W13-1	36"X36" 18"X18"	"ROAD NARROWS" "25 MPH"	1-4X4 1-4X4	2
(C)	G20-2	36"X18"	"END ROAD WORK"	2-4X4	3
(D)	R11-2	48"X36"	"ROAD CLOSED"	MOUNT ON TYPE III BARRICADE	1
(E)	W20-3 (500)	36"X36"	"ROAD CLOSED" 500 FT	1-4X4	1
(F)	W20-3 (1000)	36"X36"	"ROAD CLOSED" 1000 FT	1-4X4	1
(3S)	M4-8 STREET NAME SIGN	36"X18" 48"X24"	"DETOUR" "BASS LAKE ROAD" LARGE ARROW (ONE DIRECTION)	2-4X4	6
(3L)	W1-6(L)	48"X24"	LARGE ARROW (ONE DIRECTION)	1-4X4	2
(3R)	W1-6(R)	48"X24"	LARGE ARROW (ONE DIRECTION)	1-4X4	2
(1)	R11-3 (MODIFIED)	60"X30"	"BASS LAKE ROAD CLOSED LOCAL TRAFFIC ONLY USE SILVER SPRINGS PARKWAY"	2-4X4	3
(2)	M4-8A	36"X24"	"END DETOUR"	1-4X4	2

**DETOUR SIGNS**

- (1) "BASS LAKE ROAD CLOSED LOCAL TRAFFIC ONLY USE SILVER SPRINGS PARKWAY"
- (2) END DETOUR (M4-8A)
- (3) (M4-8) BASS LAKE ROAD
- (4) ROAD CLOSED 1000 FT (W20-3 "1000")
- (5) ROAD CLOSED 500 FT (W20-3 "500")
- (6) ROAD CLOSED TYPE III BARRICADE (R11-2 "500")



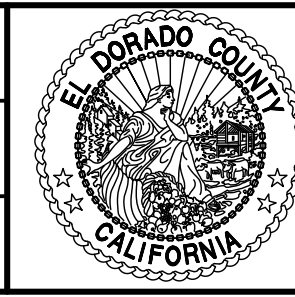
PLANS ACCURATE FOR STAGE CONSTRUCTION ONLY

REVISION	NUMBER	DATE	DESCRIPTION	BY



PREPARED UNDER THE SUPERVISION OF:  
*Kevin Mayzel*  
 REGISTERED CIVIL ENGINEER  
 DATE: 06/01/20

DESIGNED: KM  
 DRAWN: EQW/SAF  
 CHECKED: P.J.L.  
 DATE: 06/01/20  
 ROAD NUMBER:



**COUNTY OF EL DORADO  
 DEPARTMENT OF TRANSPORTATION**

**SILVER SPRINGS PARKWAY OFFSITE  
 (SOUTH SEGMENT)  
 STAGE 3 OFF-SITE SIGNAGE PLAN**

SHEET  
**31**  
 OF **34**  
 W.O. No. **76108**